



JLAB®  
JBUDS OPEN  
SPORT EARBUDS

**We love that you are rocking JLab!**  
**We take pride in our products and fully stand behind them.**



#### YOUR WARRANTY

All warranty claims are subject to JLab authorization and at our sole discretion. Retain your proof of purchase to ensure warranty coverage.



#### CONTACT US

Reach out to us at [support@jlab.com](mailto:support@jlab.com) or visit [jlab.com/contact](https://jlab.com/contact)

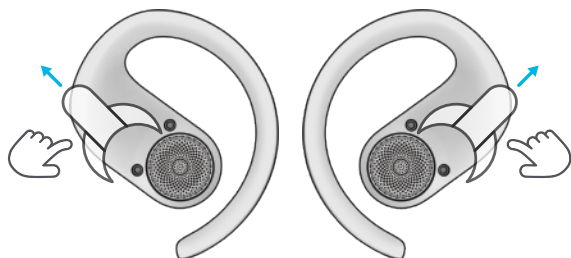
### REGISTER TODAY

[jlab.com/register](https://jlab.com/register)

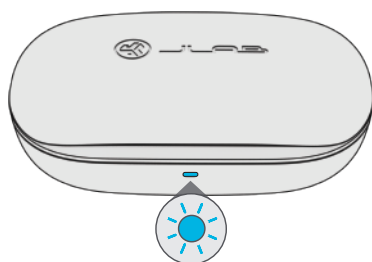
[Product updates](#) | [How-to tips](#)  
[FAQs & more](#)

## PAIR UP

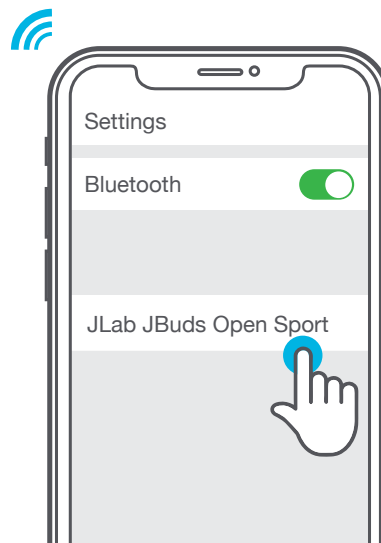
- 1** Remove stickers and place back in charging case.



- 2** Blue light on case indicates charge. Remove earbuds.



- 3** One earbud blinks blue/white = Ready to Pair  
Connect to JLab JBuds Open Sport in your device settings.



## GO AHEAD, PUSH THE BUTTON

1x ●    2x ●●    3x ●●●    Press Hold ■■■■



VOLUME DOWN ●  
SIRI/OK GOOGLE ●●  
TRACK BACK ■■■■  
EQ CHANGE ●●●



VOLUME UP ●  
PLAY/PAUSE ●●  
TRACK FORWARD ■■■■  
EQ CHANGE ●●●

ANSWER CALL ●

HANG UP ●●

REJECT INCOMING CALLS ■■■■

## THE RIGHT SOUND FOR EVERY MOMENT

### EQUALIZER MODES



#### JLab SIGNATURE

JLab C3™ signature sound  
with amplified bass and vocals



#### BALANCED

Even sound with no  
additional enhancements

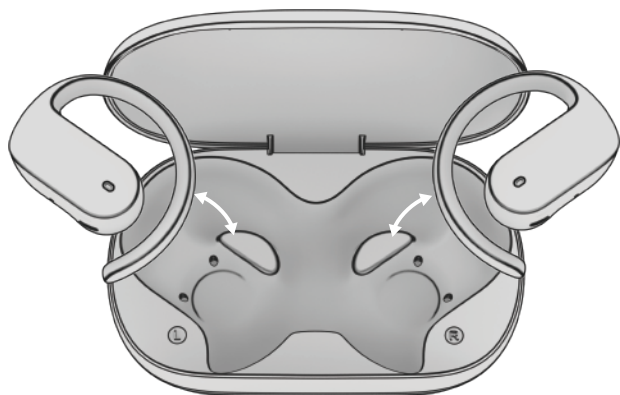


#### CUSTOM

Personalize your EQ  
through the JLab App.

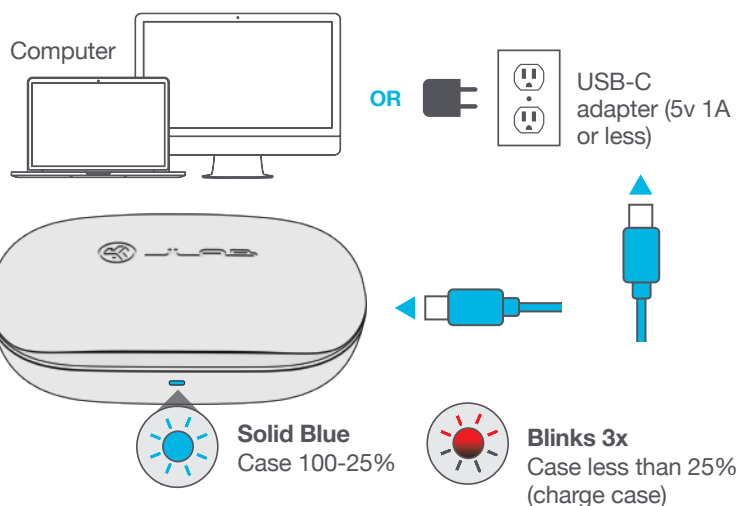
## GET CHARGED (EARBUDS)

- 1 Earbuds auto power off and start charging when placed in case. Earbuds will auto-connect when removed.

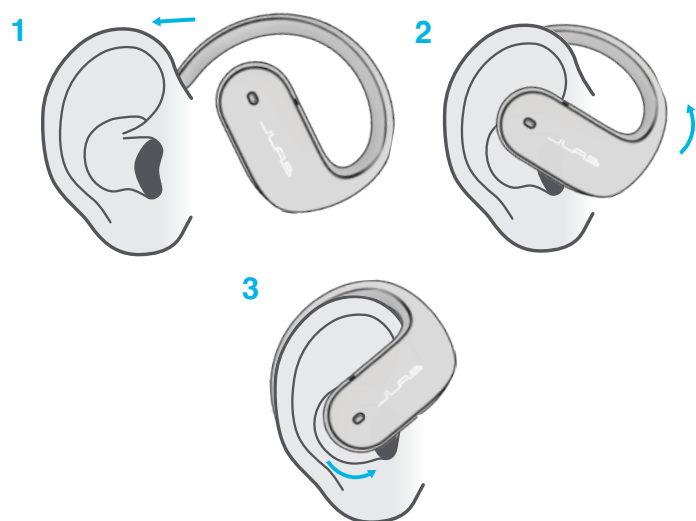


Blue light  
Earbuds charging

## GET CHARGED (CASE)



## FIND YOUR FIT



## DOWNLOAD THE APP

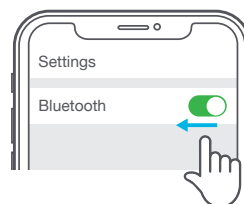
Customize JBuds Open Sport with features like an interval timer and update to the latest software.

Download the **JLab App** in Apple/Google Play Store.



## MULTIPOINT

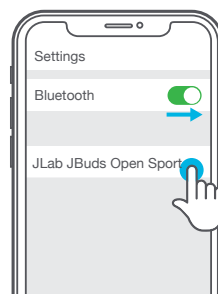
- 1 Once **FIRST** device is connected, turn off Bluetooth in device settings. Earbuds will auto enter Bluetooth Pairing.



- 2 Enter your **SECOND** device Bluetooth settings and connect.



- 3 Enter your **FIRST** device Bluetooth settings. Turn on Bluetooth and connect to JLab JBuds Open Sport.



[Shop products](#) | [Product alerts](#) | [Burn-in your headphones](#)

JLab Store + Burn-in Tool



[JLAB.COM](https://www.jlab.com)