



We love that you are rocking JLab!  
We take pride in our products and fully stand behind them.



#### YOUR WARRANTY

All warranty claims are subject to JLab authorization and at our sole discretion. Retain your proof of purchase to ensure warranty coverage.



#### CONTACT US

Reach out to us at [support@jlab.com](mailto:support@jlab.com) or visit [jlab.com/contact](https://jlab.com/contact)

#### REGISTER TODAY

[jlab.com/register](https://jlab.com/register)

Product updates | How-to tips  
FAQs & more

## BLUETOOTH

1



Press and hold button for **8 seconds**. Release. Lights will **flash blue/red**.



2

Enter your Bluetooth device settings and select JLab JBuds Lux ANC.

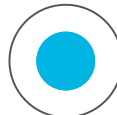


## CHARGING

CHARGING



CHARGED



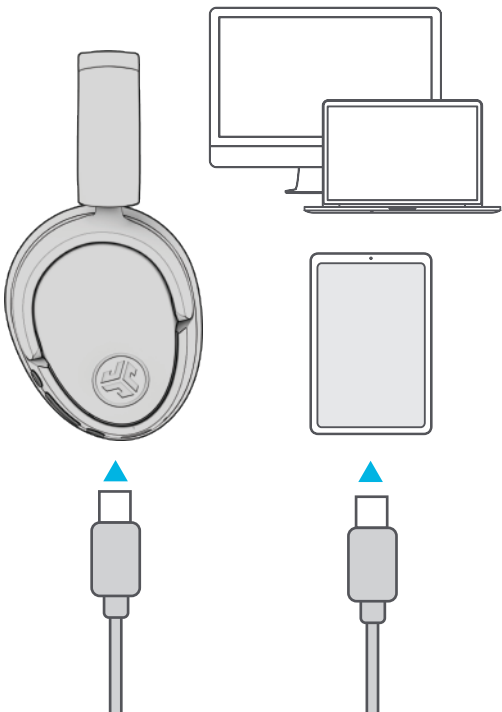
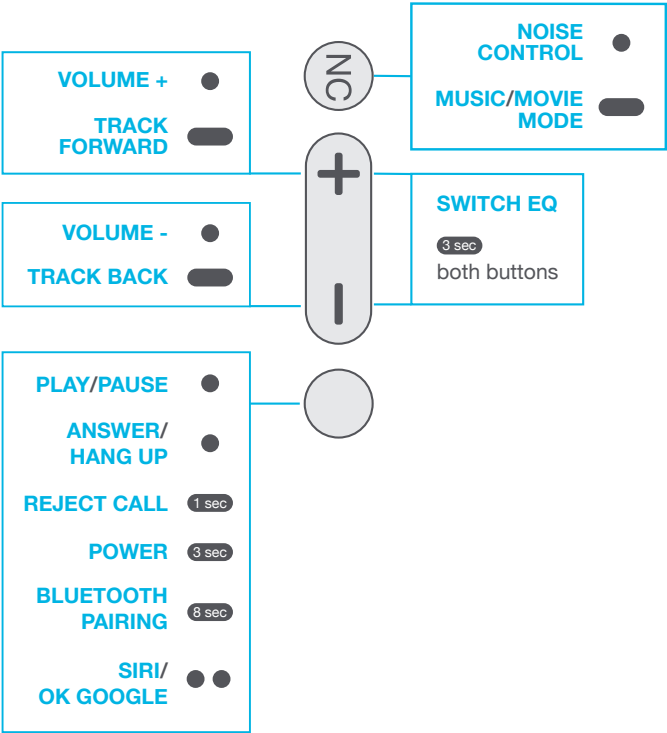
Connect to computer or 5V USB-C charger.

CONTROLS

GO WIRED

Connect USB-C cable to computer/tablet/phone for wired mode.

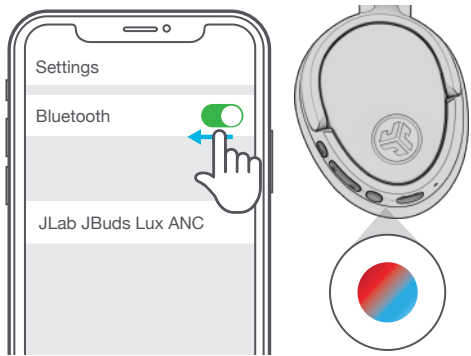
1x Press ●    2x Press ● ●    Press Hold 



BLUETOOTH MULTIPOINT (CONNECT 2 DEVICES SIMULTANEOUSLY)

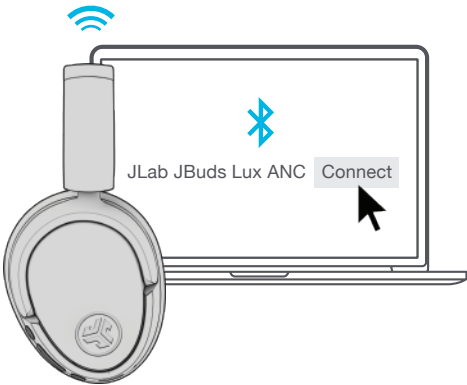
1

Once **FIRST** device is connected, turn off Bluetooth in device settings. JBuds Lux will auto enter Bluetooth Pairing.



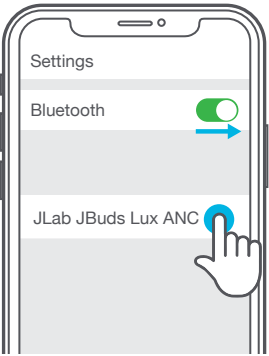
2

Enter your **SECOND** device Bluetooth settings and connect to JBuds Lux.



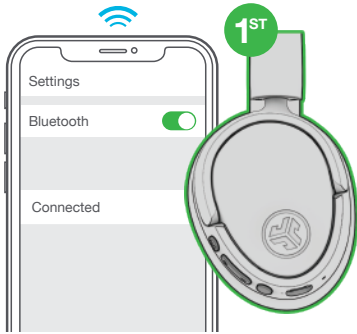
3

Enter **FIRST** device settings. Turn on Bluetooth and reconnect to JBuds Lux.



## SHARE MODE (SHARE BETWEEN TWO JBUDS LUX HEADPHONES)

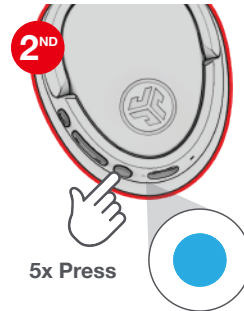
- 1 Connect **FIRST** headphone to device.



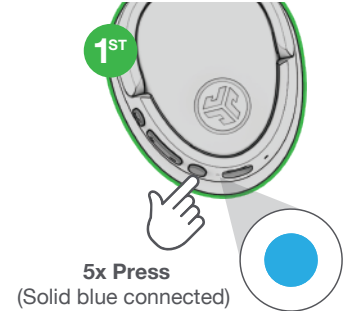
- 2 **SECOND** headphone should be powered off. **Press hold** until flashing blue/red.



- 3 **SECOND** headphone **5x Press** and blinks blue.



- 4 **FIRST** headphone **5x Press** to share.



## DOWNLOAD THE MOBILE APP

Customize JBuds Lux features and update the latest software.



SCAN ME



[Shop products](#) | [Product alerts](#) | [Burn-in your headphones](#)

JLab Store + Burn-in Tool



[JLAB.COM](https://www.jlab.com)