



FLEX OPEN  
|  
EARBUDS

We love that you are rocking JLab!  
We take pride in our products and fully stand behind them.



#### YOUR WARRANTY

All warranty claims are subject to JLab authorization and at our sole discretion. Retain your proof of purchase to ensure warranty coverage.



#### CONTACT US

Reach out to us at [support@jlab.com](mailto:support@jlab.com) or visit [jlab.com/contact](https://jlab.com/contact)

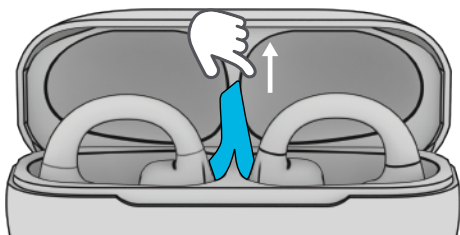
### REGISTER TODAY

[jlab.com/register](https://jlab.com/register)

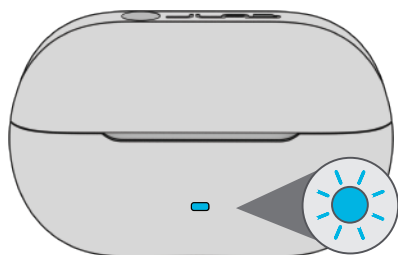
[Product updates](#) | [How-to tips](#)  
[FAQs & more](#)

## PAIR UP

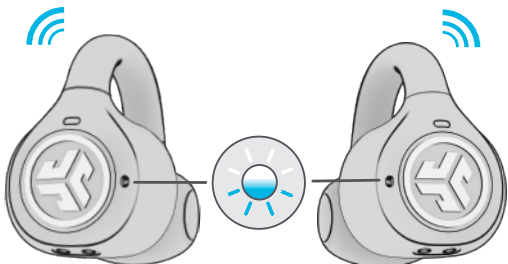
- 1 Remove tab and close door.



- 2 Blue light on case indicates charge.  
Remove earbuds from case.

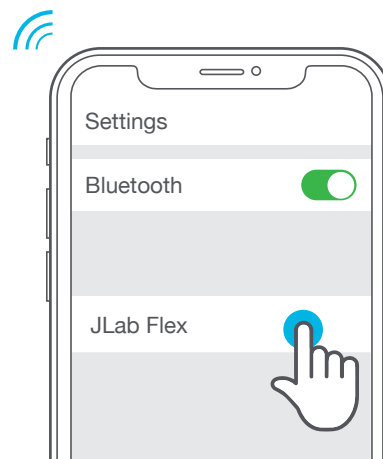
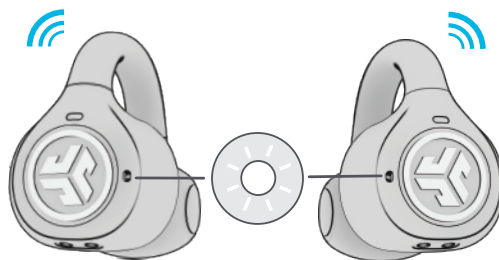


- 3 One earbud will **blink blue/white** indicating ready to pair to your device.

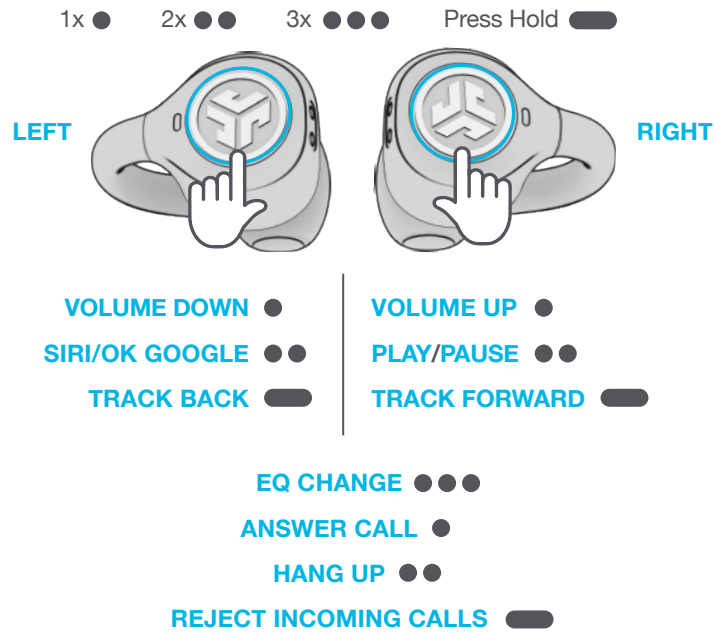


- 4 Select JLab Flex in your device's Bluetooth settings to connect.

Voice prompt "Bluetooth connected" followed by **lights off** will indicate connection.



## GO AHEAD, PRESS THE BUTTON



## THE RIGHT SOUND FOR EVERY MOMENT

We get it, sound is personal. Choose your sound preferences from our EQ3 settings and customize your sound style to match exactly what you're doing.



### JLab SIGNATURE

JLab C3™ signature sound with amplified bass and vocals

#### BEST FOR

Best option for most music Pop, rock, country, electronic and more



### BALANCED

Even sound with no additional enhancements

#### BEST FOR

Podcasts, Audiobooks, Classical music



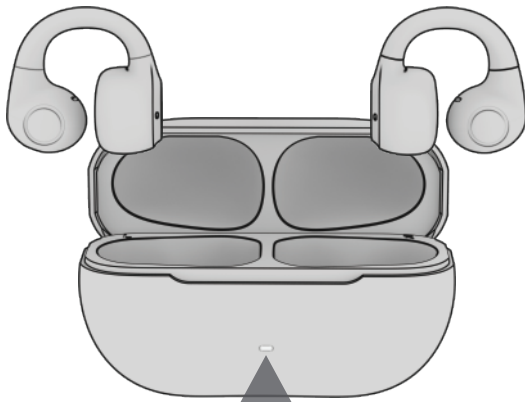
### BASS BOOST

Amplified bass and sub-bass

## GET CHARGED (EARBUDS)

1

Earbuds will power off when placed in the case and start charging.



**Solid Blue**  
Case 100-25%



**Blinks 3x Red**  
Case less than 25%  
(charge case)

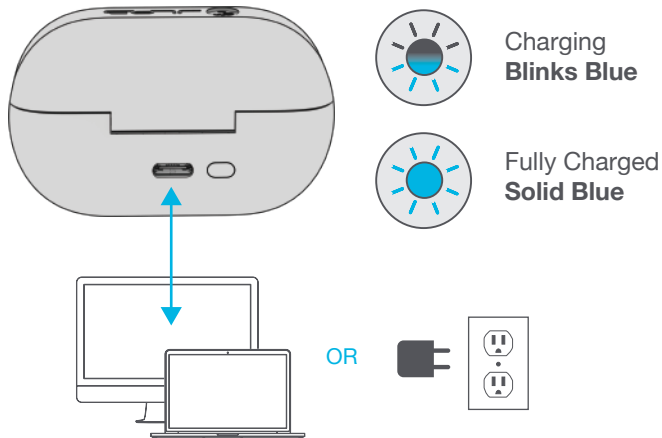
2

Earbuds will auto power on and reconnect when removed.

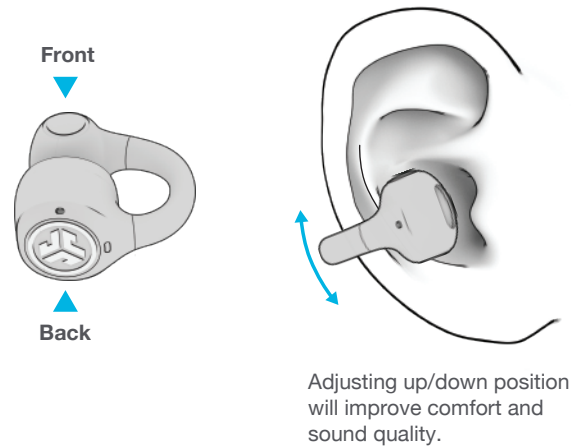


## GET CHARGED (CASE)

Connect the JLab Flex into a computer or USB-C 5V 1A (or less) output device.

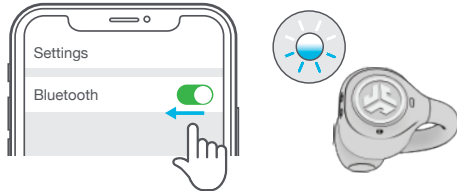


## FITTING



## MULTIPOINT

- 1 Once **FIRST** device is connected, turn off Bluetooth in device settings. JLab Flex will auto enter Bluetooth Pairing.



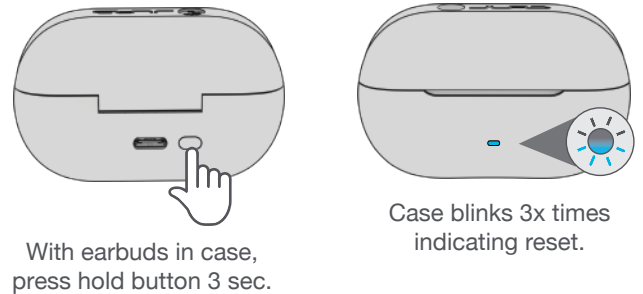
- 2 Enter your **SECOND** device Bluetooth settings and connect to JLab Flex.



- 3 Enter your **FIRST** device Bluetooth settings. Turn on Bluetooth and connect to JLab Flex.



## TROUBLESHOOTING CONNECTION FAILURE/ISSUES (MANUAL RESET)



Instructional videos at: [JLAB.COM/SUPPORT/FLEX](https://www.jlab.com/support/flex)

## DOWNLOAD THE APP

Customize JLab Flex with features like an interval timer and update to the latest software.

Download the **JLab App** in Apple/Google Play Store.



[Shop products](#) | [Product alerts](#) | [Burn-in your headphones](#)

JLab Store + Burn-in Tool



[JLAB.COM](https://www.jlab.com)