



EPIC OPEN  
SPORT EARBUDS

**We love that you are rocking JLab!**  
**We take pride in our products and fully stand behind them.**



#### YOUR WARRANTY

All warranty claims are subject to JLab authorization and at our sole discretion. Retain your proof of purchase to ensure warranty coverage.



#### CONTACT US

Reach out to us at [support@jlab.com](mailto:support@jlab.com) or visit [jlab.com/contact](https://jlab.com/contact)

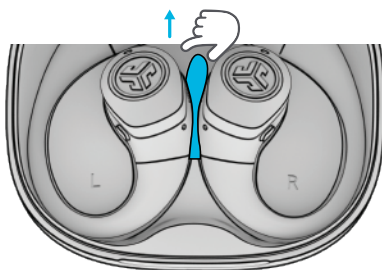
### REGISTER TODAY

[jlab.com/register](https://jlab.com/register)

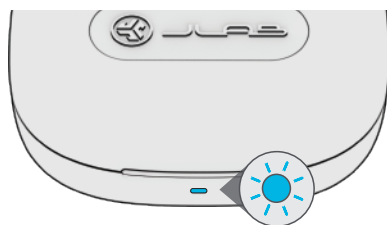
[Product updates](#) | [How-to tips](#)  
[FAQs & more](#)

## PAIR UP

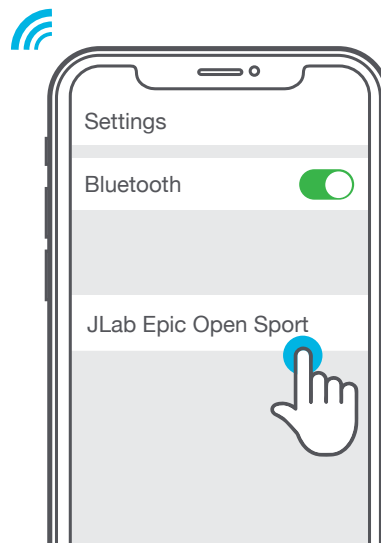
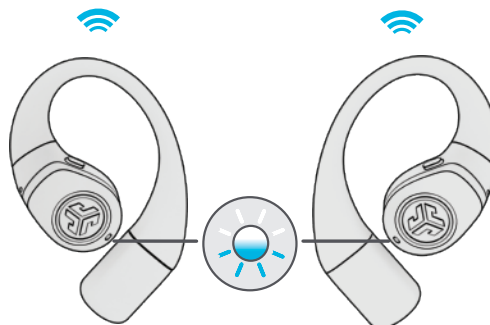
- 1** Remove pull tab and close case door.



- 2** Blue light on case indicates charge. Remove earbuds.

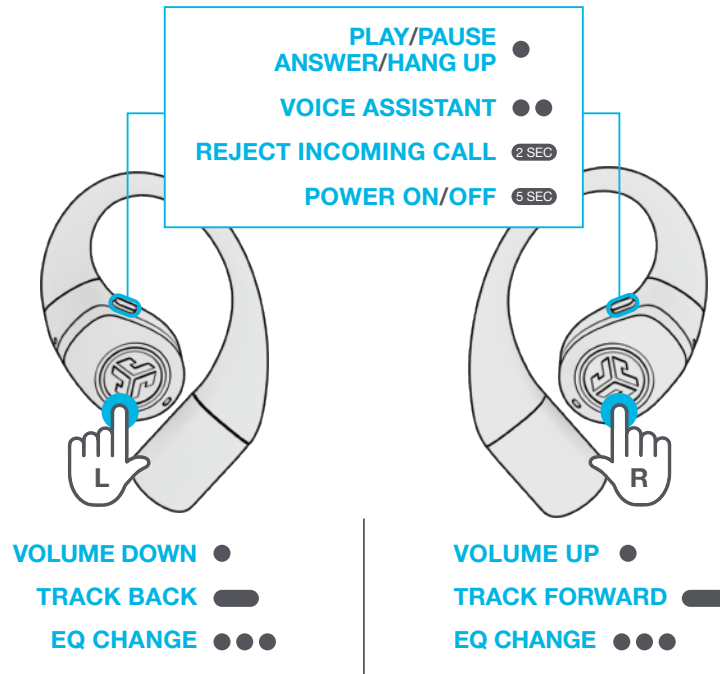


- 3** One earbud blinks blue/white = Ready to Pair  
Connect to JLab Epic Open Sport in your device settings.



## GO AHEAD, PUSH THE BUTTON

1x ●    2x ●●    3x ●●●    Press Hold ●●●●



## THE RIGHT SOUND FOR EVERY MOMENT

### EQUALIZER MODES



#### JLab SIGNATURE

JLab C3™ signaturesound with amplified bass and vocals



#### BALANCED

Even sound with no additional enhancements

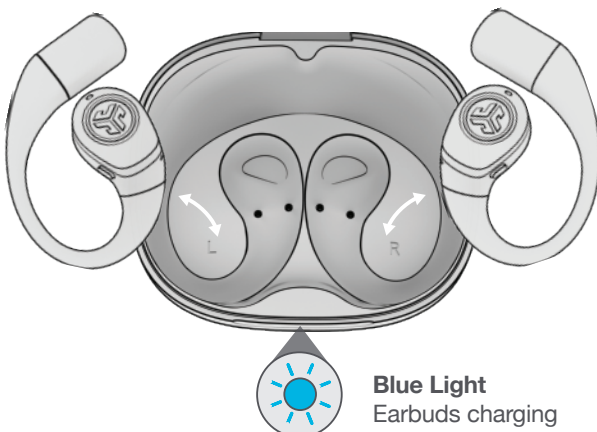


#### CUSTOM

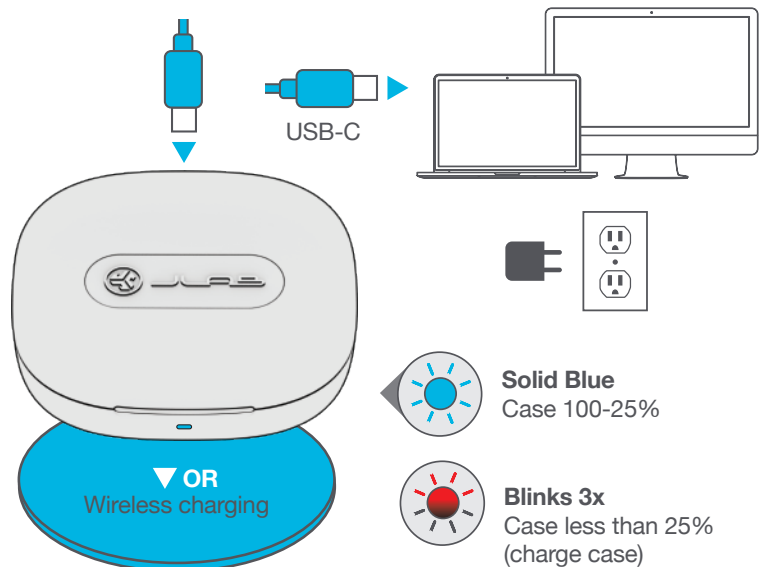
Personalize your EQ through the JLab App.

## GET CHARGED (EARBUDS)

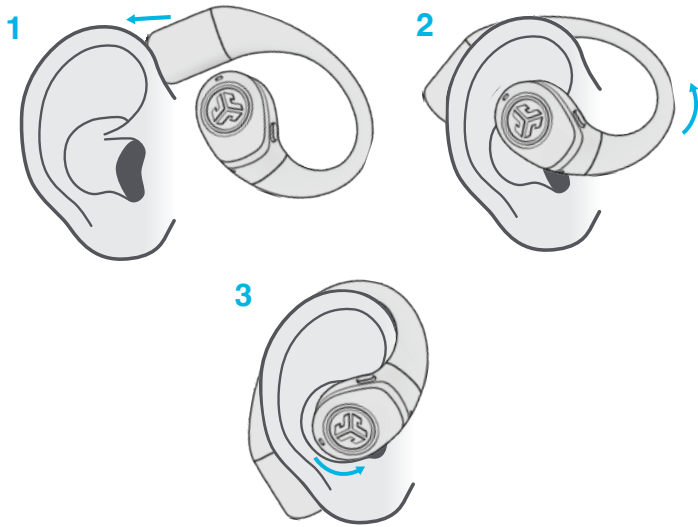
- 1** Earbuds auto power off and start charging when placed in case. Earbuds will auto-connect when removed.



## GET CHARGED (CASE)



## FIND YOUR FIT



## DOWNLOAD THE APP

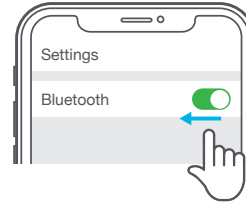
Customize Epic Open Sport features and update the latest software.

Download the **JLab App** in Apple/Google Play Store.



## MULTIPOINT

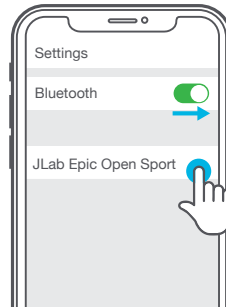
- 1 Once **FIRST** device is connected, turn off Bluetooth in device settings. Earbuds will auto enter Bluetooth Pairing.



- 2 Enter your **SECOND** device Bluetooth settings and connect.



- 3 Enter your **FIRST** device Bluetooth settings. Turn on Bluetooth and connect to Epic Open Sport.



[Shop products](#) | [Product alerts](#) | [Burn-in your headphones](#)

JLab Store + Burn-in Tool



[JLAB.COM](https://www.jlab.com)