

Always there to help you

Register your product and get support at
www.philips.com/support

BT100



User manual

PHILIPS

Contents

1	Important	2
	Safety	2
	Notice	3
<hr/>		
2	Your portable speaker	6
	Introduction	6
	What's in the box	6
	Overview of the speaker	7
<hr/>		
3	Get started	8
	Charge the built-in battery	8
	Select a source or turn off	9
<hr/>		
4	Use Bluetooth devices	10
	Connect a device	10
	Play audio via Bluetooth	11
	Make a call	12
<hr/>		
5	Listen to an external device	13
<hr/>		
6	Product information	14
	Specifications	14
<hr/>		
7	Troubleshooting	15
	General	15
	About Bluetooth device	16

1 Important

Safety

Important safety instructions

- ① Read these instructions.
- ② Keep these instructions.
- ③ Heed all warnings.
- ④ Follow all instructions.
- ⑤ Do not use this apparatus near water.
- ⑥ Clean only with dry cloth.
- ⑦ Do not block any ventilation openings. Install in accordance with the manufacturer's instructions.
- ⑧ Do not install near any heat sources such as radiators, heat registers, stoves, or other apparatus (including amplifiers) that produce heat.
- ⑨ Only use attachments/accessories specified by the manufacturer.
- ⑩ Refer all servicing to qualified service personnel. Servicing is required when the apparatus has been damaged in any way, such as liquid has been spilled or objects have fallen into the apparatus, the apparatus has been exposed to rain or moisture, does not operate normally, or has been dropped.
- ⑪ Apparatus shall not be exposed to dripping or splashing.
- ⑫ Do not place any sources of danger on the apparatus (e.g. liquid filled objects, lighted candles).

- ⑬ **Battery shall not be exposed to excessive heat such as sunshine, fire or the like.**
- Perchlorate Material - special handling may apply. See www.dtsc.ca.gov/hazardouswaste/perchlorate.
 - Danger of explosion if battery is incorrectly replaced. Replace only with the same or equivalent type.



Warning

- Never remove the casing of this apparatus.
- Never lubricate any part of this apparatus.
- Never place this apparatus on other electrical equipment.

Notice

Any changes or modifications made to this device that are not expressly approved by WOOX Innovations may void the user's authority to operate the equipment.

Notice for the USA and Canada

This device complies with Part 15 of the FCC Rules and RSS standard of Industry Canada. Operation is subject to the following two conditions:

- 1 this device may not cause harmful interference, and
- 2 this device must accept any interference received, including interference that may cause undesired operation.

Le présent appareil est conforme aux CNR d'Industrie Canada applicables aux appareils radio exempts de licence. L'exploitation est autorisée aux deux conditions suivantes : (1) l'appareil ne doit pas produire de brouillage, et (2) l'utilisateur de l'appareil doit accepter tout brouillage radioélectrique subi, même si le brouillage est susceptible d'en compromettre le fonctionnement.

This equipment has been tested and found to comply with the limits for a Class B digital device, pursuant to part 15 of the FCC Rules and ICES-003 of Industry Canada . These limits are designed to provide reasonable protection against harmful interference in a residential installation. This equipment generates, uses, and can radiate radio frequency energy and, if not installed and used in accordance with the instruction manual, may cause harmful interference to radio communications.

However, there is no guarantee that interference will not occur in a particular installation. If this equipment does cause harmful interference to radio or television reception, which can be determined by turning the equipment off and on, the user is encouraged to try to correct the interference by one or more of the following measures:

- Relocate the receiving antenna.
- Increase the separation between equipment and receiver.
- Connect the equipment into an outlet on a circuit different from that to which the receiver is connected.
- Consult the dealer or an experienced radio/TV technician for help.

RF Radiation Exposure Statement: This equipment complies with FCC's and IC's RF radiation exposure limits set forth for an uncontrolled environment. The antenna(s) used for this transmitter must be installed and operated to provide a separation distance of at least 20 cm from all persons and must not be collocated or operating in conjunction with any other antenna or transmitter. Installers must ensure that 20cm separation distance will be maintained between the device (excluding its handset) and users.

Radio interference

This Class B digital apparatus complies with Canadian ICES-003.

Disposal of your old product and battery

Your product is designed and manufactured with high quality materials and components, which can be recycled and reused.

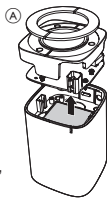


This product may contain lead and mercury. Disposal of these materials may be regulated due to environmental considerations. For disposal or recycling information, please contact your local authorities or visit www.recycle.philips.com.

This product contains non-removable batteries:

- Do not incinerate. Batteries may explode if overheated.
- For disposal or recycling information, please contact your local authorities or visit www.recycle.philips.com.

Always bring your product to a professional to remove the built-in battery. (A)



Environmental information

All unnecessary packaging has been omitted. We have tried to make the packaging easy to separate into three materials: cardboard (box), polystyrene foam (buffer) and polyethylene (bags, protective foam sheet.)

Your system consists of materials which can be recycled and reused if disassembled by a specialized company. Please observe the local regulations regarding the disposal of packaging materials, exhausted batteries and old equipment

Bluetooth

The Bluetooth® word mark and logos are registered trademarks owned by Bluetooth SIG, Inc. and any use of such marks by WOOX Innovations is under license.



Note

- The type plate is located on the bottom of the apparatus.

2 Your portable speaker

Congratulations on your purchase, and welcome to Philips! To fully benefit from the support that Philips offers, register your product at www.philips.com/welcome.

Introduction

With this speaker, you can

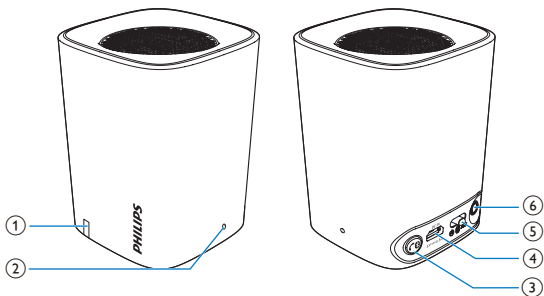
- listen to audio from an external device via Bluetooth connection,
 - listen to audio from an external device through the **AUX** socket, and
 - make phone calls.
-

What's in the box

Check and identify the contents of your package:

- Main unit
- USB cable
- Short user manual

Overview of the speaker



① Battery/Bluetooth indicator

- Lights up, flashes or turns off depending on the status of BT100.
- For details, see the following section Charging indicator and Bluetooth indicator.

② Integrated microphone

③

- Press to answer an incoming call.
- Press to end the current call.
- Press and hold for 3s to reject an incoming call.
- Press and hold for 3s to change call between BT100 and mobile phone.
- In Bluetooth mode, press and hold for 8s to clear the pairing information.

④ DC IN

- Charge BT100 through the USB cable.

⑤ OFF AUX

- Slide to select Bluetooth/AUX IN mode.
- Slide to power off the speaker.

⑥ AUX

- Connect to an external player.

3 Get started

Always follow the instructions in this chapter in sequence.

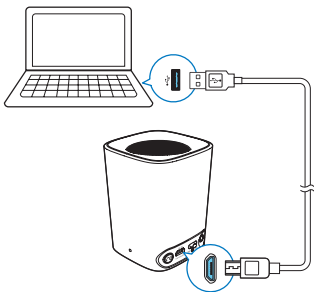
Charge the built-in battery

BT100 is powered by a built-in rechargeable battery.



Note

- Before use, fully charge the built-in battery.



Connect the USB cable between

- the **DC IN** socket on the speaker, and
- a USB socket of a computer.

Charging indicator


	Indicator	Battery
In Bluetooth mode	Flashing blue/Solid blue (depending on the working status)	Under charging
	Flashing blue/Solid blue (depending on the working status)	Fully charged
In AUX IN mode	Flashing white	Under charging
	Solid white	Fully charged
In OFF mode	Flashing white	Under charging
	OFF	Fully charged




Note

- In Bluetooth mode, when the battery is empty, **BT100** turns off automatically. And the Bluetooth indicator flashes white while recharging. To return to Bluetooth mode, turn **BT100** off and select Bluetooth mode again.
- The USB socket is for charging only.

Select a source or turn off

Slide the **OFF**  **AUX** switch to select a source or turn off BT100.

-  : Listen to an external Bluetooth device through Bluetooth connection.
- **AUX IN**: Listen to an external device through an audio input cable.
- **OFF**: Turn off BT100.

4 Use Bluetooth devices


With this speaker, you can listen to audio from a player and make a call through Bluetooth.



Note

- Make sure that no audio input cable is connected to the **AUX** socket.
- Philips does not guarantee the compatibility with all Bluetooth devices.
- Before pairing a device with this system, read its user manual for Bluetooth compatibility.
- The product can memorize a maximum of 8 paired devices.
- Make sure that Bluetooth function is enabled on your device, and your device is set as visible to all other Bluetooth devices.
- Any obstacle between this system and a Bluetooth device can reduce the operational range.
- Keep away from any other electronic device that may cause interference.

Connect a device

- 1 Switch the slider to .
- 2 On your Bluetooth device, search for **BT100**.
- 3 In the device list, select **PHILIPS BT100**.
 - If a message prompts for the permission for Bluetooth connection with **PHILIPS BT100**, confirm it.
 - If a password is required, enter **0000** and then confirm.

↳ **BT100** beeps twice when the Bluetooth connection is established.

Bluetooth indicator

The LED indicator on the top indicates the status of Bluetooth connection.

Indicator	Bluetooth connection
Flashing blue	Connecting or waiting for connection
Solid blue	Connected

Disconnect a device

- On your device, disable the Bluetooth connection with **BT100**.
- Or, on **BT100**, press and hold  when it is not during a call.



Note

- Before connecting another Bluetooth device, disconnect the current device first.

Reconnect a device

- For a paired Bluetooth device on which the automatic reconnection is enabled, this product reconnects with it once it is detected.
- For a paired Bluetooth device that does not support the automatic reconnection, reconnect it with this product manually.

Play audio via Bluetooth




Note

- If there is an incoming call on the connected mobile phone, music play pauses.


Buttons	Functions
---------	-----------



	Press and hold for 8 seconds to clear the Bluetooth pairing information.
--	--

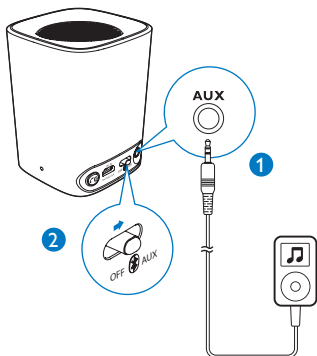
Make a call

Button functions in Bluetooth mode

Buttons	Status	Functions
	Incoming call	Press to answer an incoming call. Press and hold for more than 3 seconds to reject an incoming call.
	During a call	Press to end the current call. Press and hold for more than 3 seconds to transfer call between BT100 and the mobile phone.

5 Listen to an external device

You can also listen to an external audio device, for example, MP3 player; through **BT100**.



- 1 Connect an audio input cable with a 3.5 mm connector on both ends to
 - the **AUX** socket on this product, and
 - the headphone socket on the external device.
- 2 Switch the slider to the **AUX** position.
- 3 Play audio on the external device (refer to its user manual).

6 Product information



Note

- Product information is subject to change without prior notice.

Specifications

Amplifier

Rated Output Power	2W RMS
Signal to Noise Ratio	>70dB
Aux-in Link	300 mV RMS, 10 kohm

Bluetooth

Bluetooth specification	V3.0 +EDR
Supported Profiles	HFPv1.5, AD2Pv1.2
Advanced features	Echo and noise cancellations
Range	10 m/33 feet line of sight

General information

DC power input	USB: 5V, 500mA;
Built-in Li-Polymer battery	3.7V 500mAH
Battery working time	>8 hours
Dimensions - Main Unit (L x W x H)	63 x 63 x 82 mm
Weight - Main Unit	0.18 kg

7 Troubleshooting



Warning

- Never remove the casing of this device.

To keep the warranty valid, never try to repair the system yourself.

If you encounter problems when using this device, check the following points before requesting service. If the problem remains unsolved, go to the Philips Web page (www.philips.com/support). When you contact Philips, make sure that the device is nearby and the model number and serial number are available.

General

No power

- Recharge your speaker.

No sound

- Adjust volume on the connected device.
- When you listen to audio through Bluetooth, make sure that no audio input cable is connected to the **AUX** socket.
- Make sure that your Bluetooth device is within the effective operational range.

No response from the speaker

- Restart the speaker.

About Bluetooth device

The audio quality is poor after connection with a Bluetooth-enabled device.

- The Bluetooth reception is poor. Move the device closer to this product or remove any obstacle between them.

Cannot connect with the device.

- The Bluetooth function of the device is not enabled. Refer to the user manual of the device for how to enable the function.
- This product is already connected with another Bluetooth-enabled device. Disconnect that device and then try again.

The paired device connects and disconnects constantly.

- The Bluetooth reception is poor. Move the device closer to this product or remove any obstacle between them.
- For some devices, Bluetooth connection may be deactivated automatically as a power-saving feature. This does not indicate any malfunction of this product.



Specifications are subject to change without notice.
2014 © WOOX Innovations Limited. All rights reserved. Philips
and the Philips' Shield Emblem are registered trademarks of
Koninklijke Philips N.V. and are used by WOOX Innovations
Limited under license from Koninklijke Philips N.V.

BT100_27_37_UM_V2.0

